



GLOTECH

MEP Projects (OPC) Pvt Ltd

MEP Contractor

Office address:

“Chaitanya High Point”

Office no. 103, First Floor,

Phase 2, Survey No. 2/4, Opp. Bharati Vidyapeeth

English Medium School, Dasara Chowk,

Balewadi, Baner, Pune – 411045.



glotech.mep@gmail.com/glotechfire@gmail.com



+91 98509 84062

+91 98227 97921



ABOUT US:

We are Turnkey MEP Service provider founded in year 2007 , where client can find trust, reliability, quality consciousness, commitment, transparency, professionalism, competitive price and peace of mind.



KEY STRENGTHS:

- Flexibility of small organization and capability of big organization
- Strong technical and managerial expertise
- Owns large number of machinery and Equipments which reduces external dependency
- Modern Safety Equipments for staff & workers
- Highly qualified & company owned manpower strength
- Fastest mobilization capability
- Excellent vendor support / market image

Vision:

To become a trusted & reliable global leader by providing specialized MEP turnkey services, thus creating most efficient & safe premises / homes for our customers



Mission:

To aim for world class quality and become the first choice of the clients for Turnkey MEP Services.

Values:

Customer Satisfaction, Customer Focus, Continuous improvement, Commitment and highest Level of Professionalism

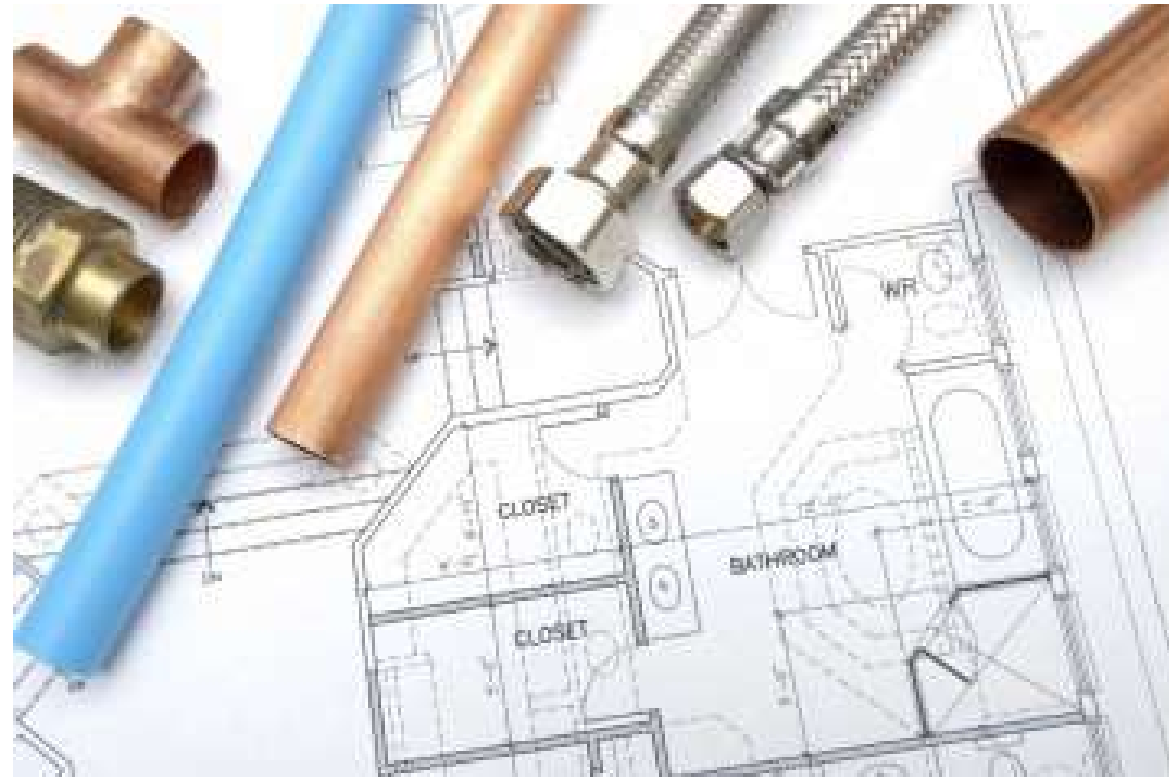


Services Offered:



All services under one roof:

- ✓ Fire Fighting & Fire Alarm Systems
- ✓ Plumbing System
- ✓ HVAC including Basement Ventilation, Staircase & Lift well Pressurization
- ✓ Electrical Systems
- ✓ Electronic Access control
- ✓ CCTV surveillance Systems
- ✓ Entry / Exit Barrier systems
- ✓ Perimeter protection
- ✓ Clean room fire suppression
- ✓ Gas detection
- ✓ PA & Voice Evacuation systems
- ✓ Integrated BMS



FIRE PROTECTION AND DETECTION SYSTEMS



Services offered under Fire detection and protection systems are

Fire Protection System

- Sprinkler System
- Hydrant System
- Flooding Fire Suppression System
- Portable Fire Extinguishers
- Water Curtain System
- Fire Plant Room works

Fire Detection System

- Manual type
- Automatic Analog Addressable
- Automatic Digital Addressable
- Wireless in above two categories

Fire Alarm System

- Addressable
- Conventional

Public Address system

Fire pump room





PLUMBING AND SANITARY SYSTEMS

Our Professionals have wide experience in the field of PHE Systems. We undertake a detailed study of your application & ensure that the water distribution system meets optimum performance parameters and the functional requirements of the installation



Services offered under Plumbing and Sanitary System are

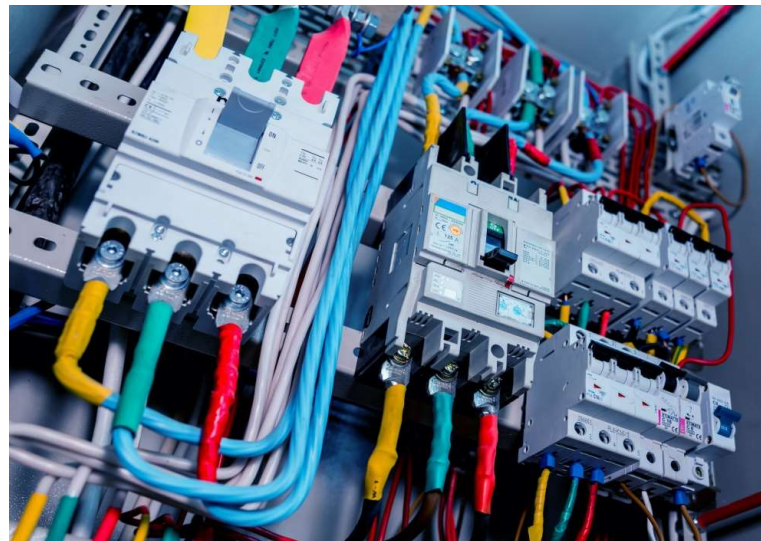
- Water supply system
- Drainage system
- Boiler & Hot water generator
- Solar hot water system
- Storm water system
- Rain water harvesting system
- Water Treatment Plant (WTP)
- Sewage treatment plant (STP)
- Swimming Pools
- Water bodies and fountains
- Sewer system



Electrical:

Service we offer:

- ✓ Liasioning Services – MSEDCL and Electrical Inspector Office
- ✓ HT and LT Turnkey Installation work .
- ✓ SOLAR PV SYSTEMS
- ✓ Consultancy and Design Services
- ✓ Residential and Commercial Electrification
- ✓ Industrial Electrification
- ✓ LT Infrastructure Development
- ✓ HT & LT Faults Jointing Services and HI POT Testing.
- ✓ Energy Audits
- ✓ CCTV Network
- ✓ Fabricated Panels for LT Distribution Works
- ✓ DG Supply and Commissioning



HVAC:

Service we offer:

- ✓ We offer Air Conditioning Solution from concept design to Execution
- ✓ We do Supply, Install, Testing and Commissioning for Central Air-Conditioning System includes
- ✓ VRF
- ✓ Chilled Water System
- ✓ We offer complete solution for Building ventilation which includes
- ✓ We offer technical solution including designing, Installation and CFC analysis
- ✓ Basement ventilation system Lift-well & Staircase system
- ✓ Fresh Air & Exhaust system for comfort Area.



Positive & passionate



Safety



Reliable & responsive



Trust & respect



Innovation



WALL MOUNTED



1 & 2-WAY CEILING CASSETTE



4-WAY CEILING CASSETTE



CEILING SUSPENDED



CEILING CONCEALED



FLOOR MOUNTED



Building Management System

BMS is a computer-based system that is installed in buildings to monitor and control the mechanical and electrical system of the building.

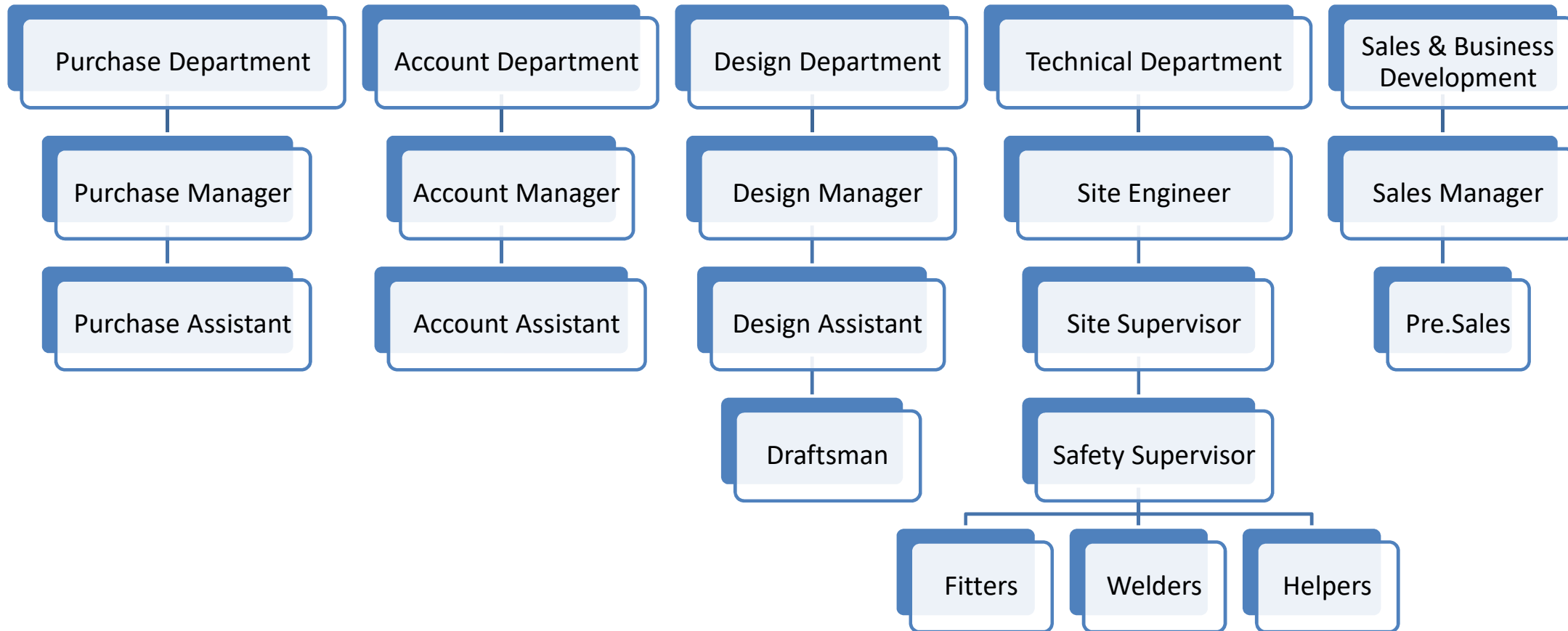
As a Integration specialist, we design, engineering, supply, installation, programming and commissioning of Complete BMS system

Few benefits of BMS are

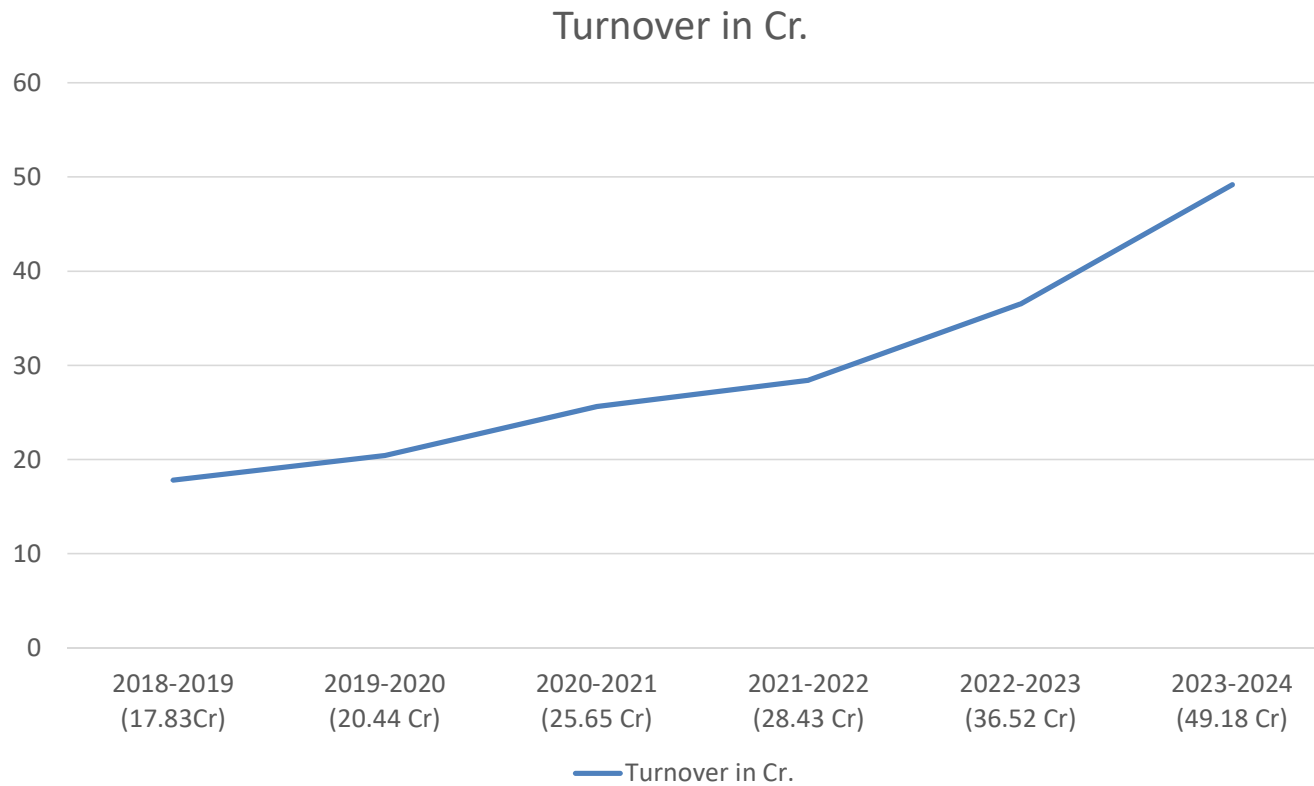
- Energy Efficient
- Reduce operation and maintenance costs:
- Lower Utility Costs
- Enhance Property Value
- Greater Occupant Comfort and Productivity
- Better Indoor Air Quality
- Centrally and intelligently controlling and monitoring all the devices of the Building
- Easy maintenance via touchscreen controllers



Organization Structure:



Turnover Details:



Partial Client Base:







THE RITZ-CARLTON®



Godrej & Boyce Mfg. Co. Ltd.



Building Relationships





Thank You